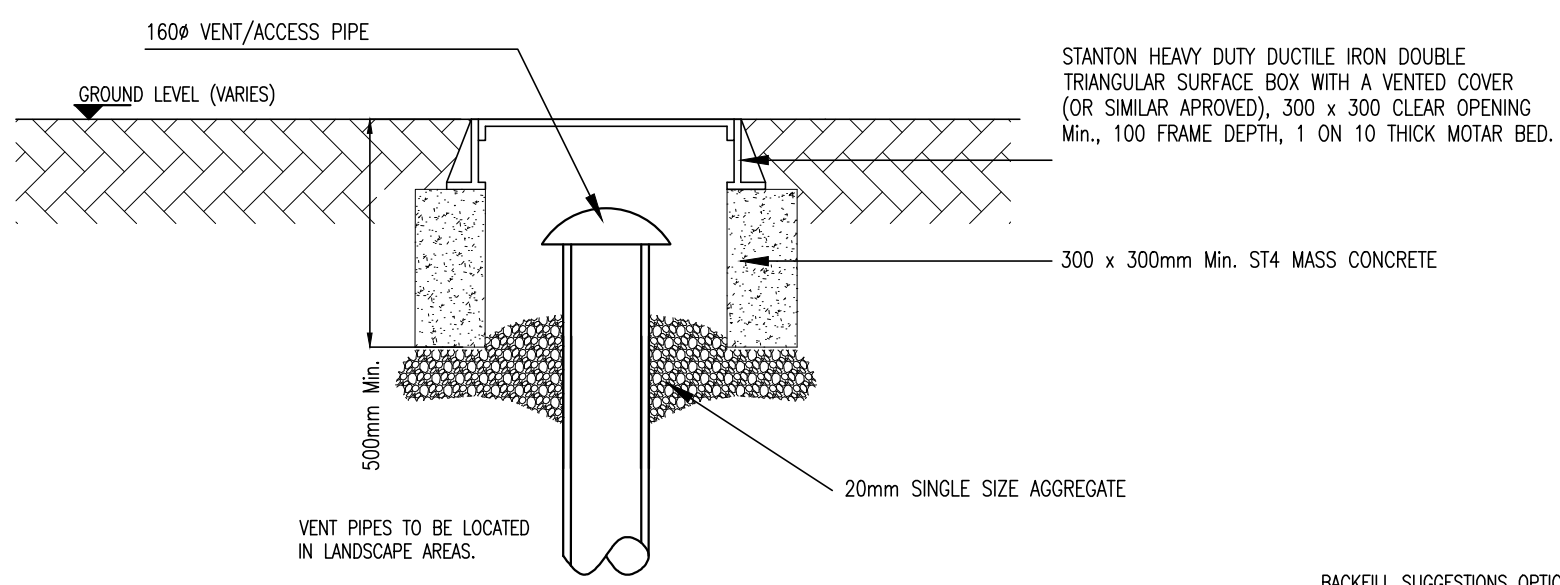


NOTES:

- C20/25 CONCRETE TO HAVE A MINIMUM CEMENT CONTENT OF 260kg/m<sup>3</sup>. MAXIMUM WATER/CEMENT RATIO OF 0.65 AND SLUMP CLASS S2.
- C25/30 CONCRETE TO HAVE A MINIMUM CEMENT CONTENT OF 280kg/m<sup>3</sup>. MAXIMUM WATER/CEMENT RATIO OF 0.65 AND SLUMP CLASS S2.
- C40/50 CONCRETE TO HAVE A MINIMUM CEMENT CONTENT OF 420kg/m<sup>3</sup>. MAXIMUM WATER/CEMENT RATIO OF 0.45 AND SLUMP CLASS S3.
- WHERE CLASS 6F1/6F2 CAPPING MATERIAL IS PROPOSED WITHIN 500mm OF CONCRETE OR STEEL, CLASS 6N TO BE USED INSTEAD.
- WHERE FOOTPATHS ARE LOCATED ADJACENT TO ROADS, C40/50 CONCRETE TO BE USED. ALTERNATIVELY, FOOTPATHS LOCATED BEHIND VERGES C25/30 CONCRETE MAY BE USED.

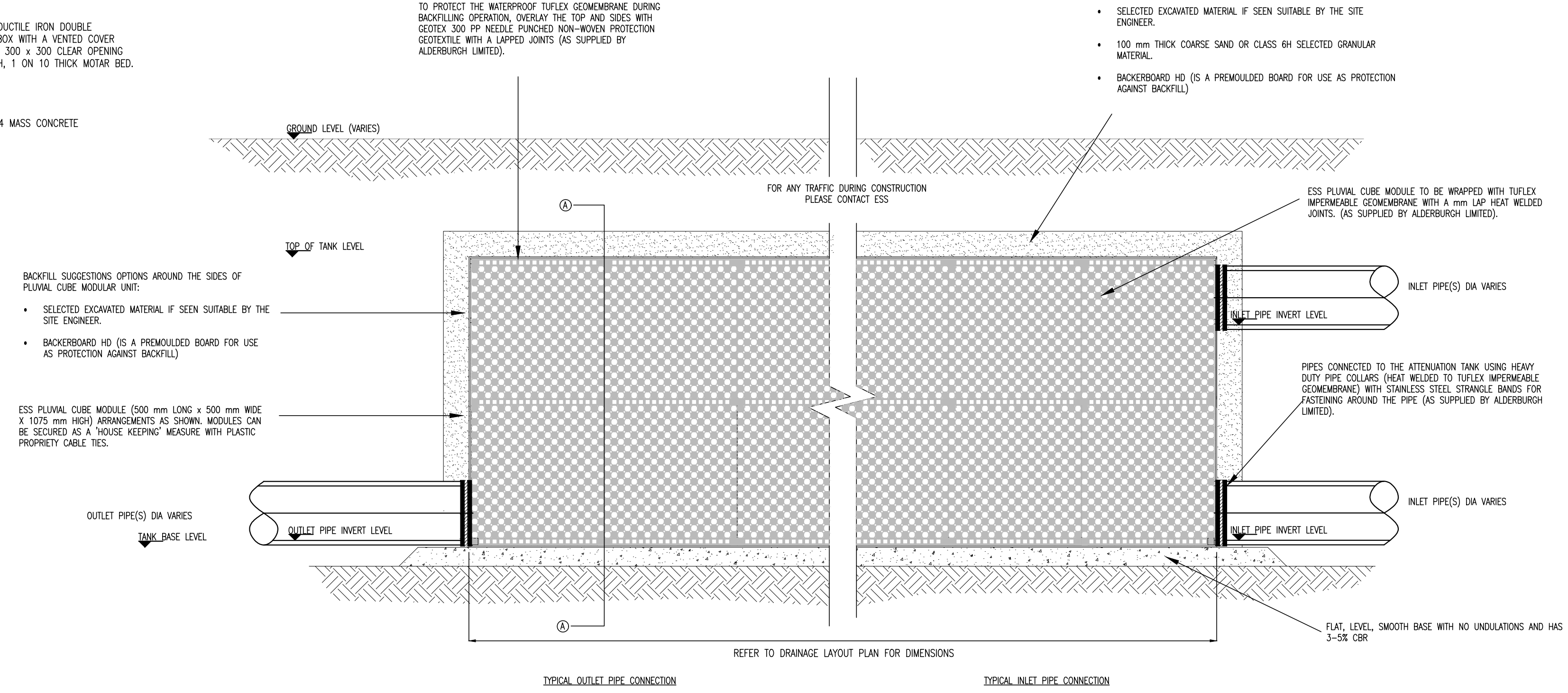
**NOTE:**  
ALL WORKS & SPECIFICATIONS TO BE UNDERTAKEN IN ACCORDANCE WITH

- TII SPECIFICATION FOR ROADWORKS
- GREATER DUBLIN CODE OF PRACTICE FOR DRAINAGE WORKS
- RECOMMENDATIONS FOR SITE DEVELOPMENT WORKS

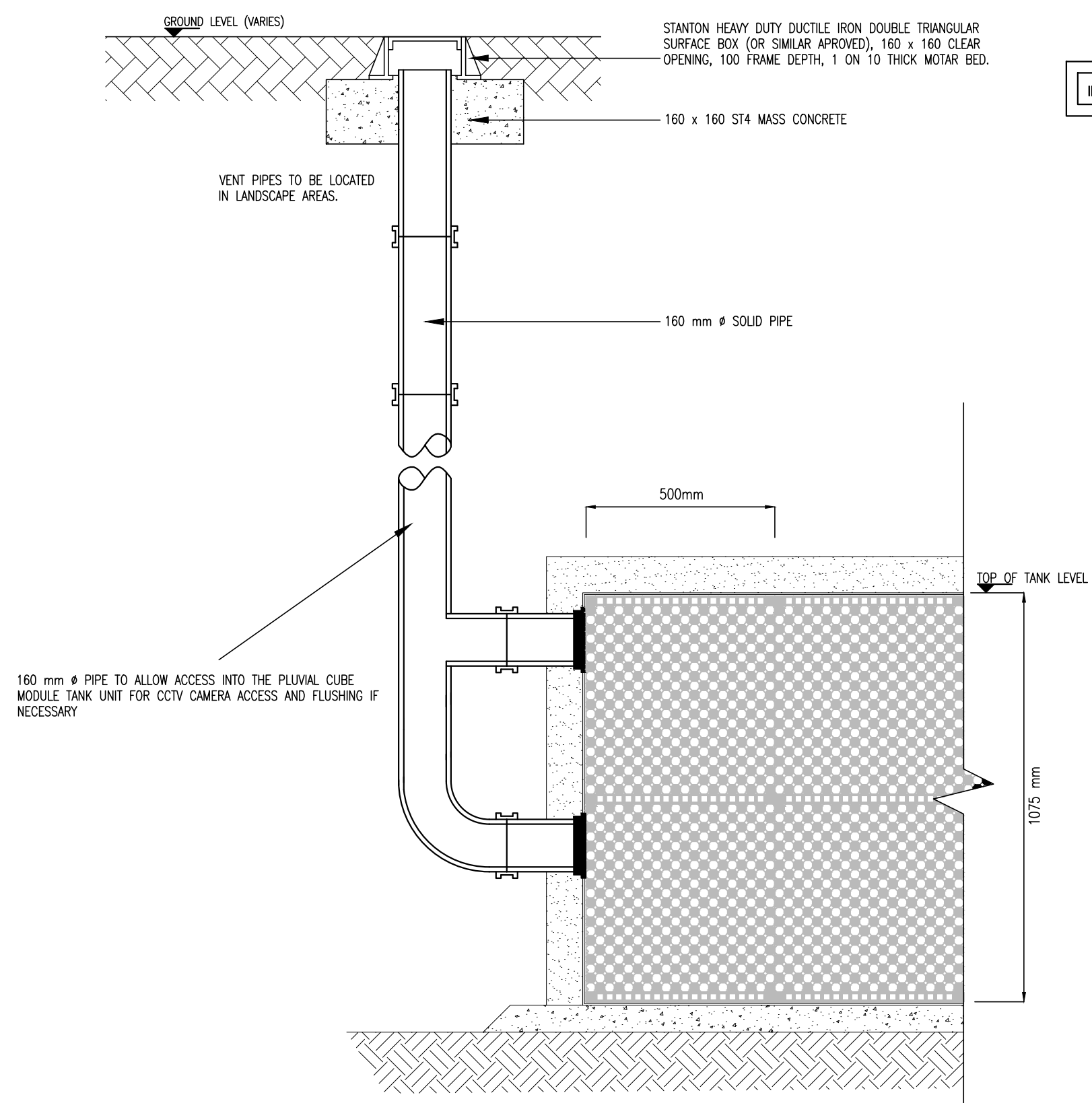


**TYPICAL VENT BOX DETAIL (OPTION 2)**

A 3 - 5% CBR HAS BEEN ASSUMED AT SUB-BASE LEVEL SHOULD THE CBR BE TESTED AND FOUND TO BE LESS THAN 3% THEN THE ENGINEER SHALL BE NOTIFIED. ALSO, ANY SOFT SPOTS FOUND AT SUB-BASE LEVEL SHALL BE REPORTED TO THE ENGINEER



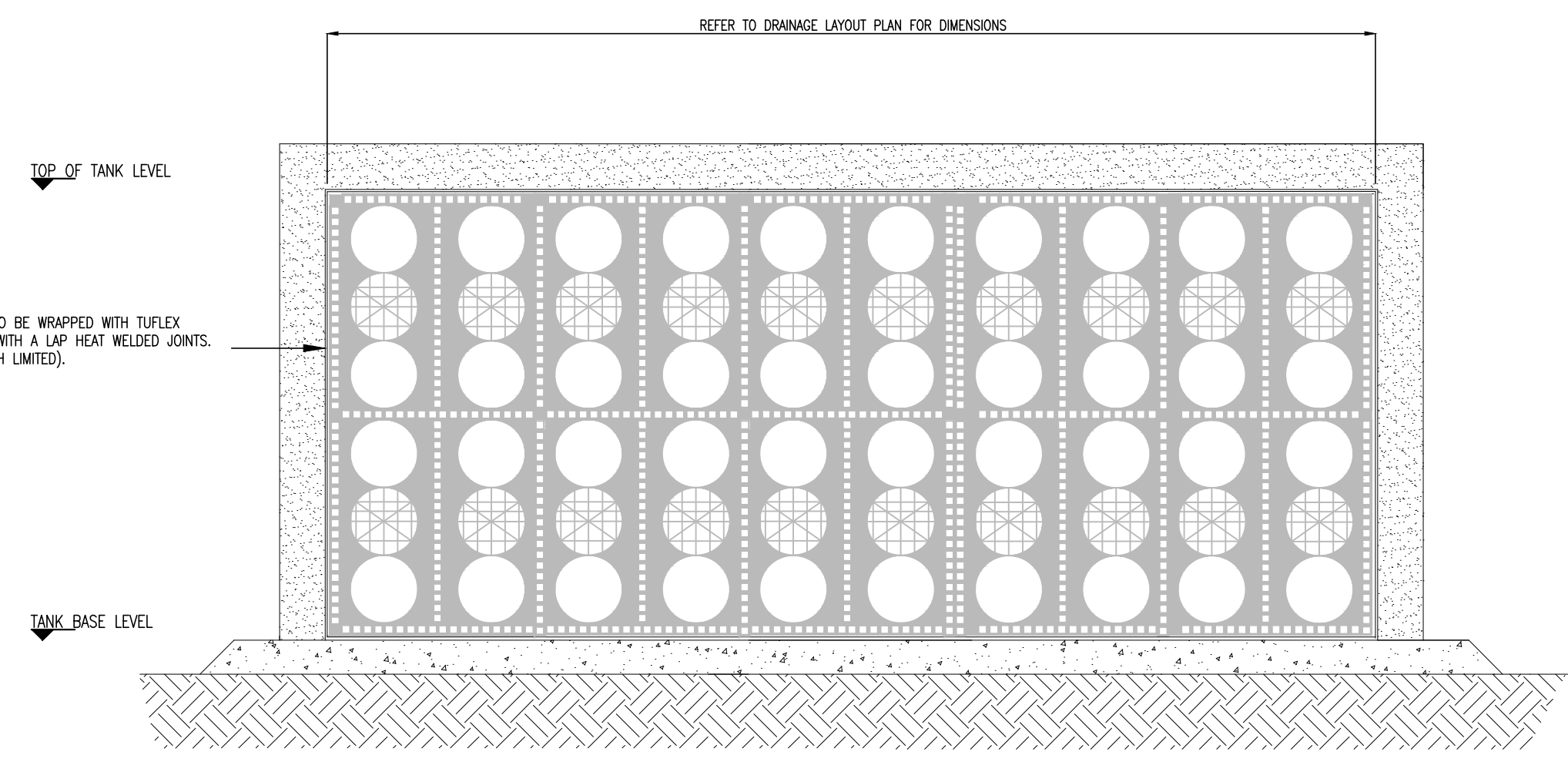
**TYPICAL DETAILS OF ATTENUATION TANK USING PLUVIAL CUBE MODULE UNITS**



**TYPICAL 160mm VENT/ACCESS PIPE CONNECTION OPTION 1**

INLET/OUTLET PIPES MUST BE SUPPORTED WITH CONCRETE TO PROTECT IT DURING BACKFILLING

THE CONTRACTOR SHALL PROHIBIT THE MOVEMENT OF CONSTRUCTION PLANT ACROSS THE STORAGE TANK AND WHERE NECESSARY PROVIDE ADDITIONAL SUPPORT AND PROTECTION TO THE STRUCTURE, PARTICULARLY POST CONSTRUCTION. TEMPORARY FENCING CAN BE USED TO PROHIBIT TRADE STOCKS, PILING MATERIALS, HEAVY PLANTS ETC.,



**TYPICAL DETAILS OF ATTENUATION TANK USING PLUVIAL CUBE MODULE UNITS SECTION A-A**

|     |          |                            |     |       |
|-----|----------|----------------------------|-----|-------|
| P02 | 15/06/21 | ISSUED FOR PLANNING        | DCH | LMCL  |
| P01 | 28/08/20 | ISSUED FOR PRE-PLANNING    | DCH | LMCL  |
| rev | date     | description                | by  | chkd. |
|     |          | A - Approved               |     |       |
|     |          | B - Approved with comments |     |       |
|     |          | C - Do not use             |     |       |

suitability S2 - INFORMATION issue purpose PLANNING

**DBFL Consulting Engineers**  
Civil, Structural & Transportation Engineering  
www.dbfl.ie

DUBLIN OFFICE: Ormond House, Upper Ormond Quay, Dublin 7, D07 W7H4  
PHONE: +353 1 450 4000  
CORK OFFICE: 14 South Mall, Cork, T12 CT91  
PHONE: +353 21 2024538  
WATERFORD OFFICE: 50a Bb The Atrium, Maritime Gate, Canada Street, Waterford, X91 WC28  
PHONE: +353 51 309 500

project ref. MIXED USE DEVELOPMENT-CHADWICKS. SWORDS ROAD, SANTRY.

drawing title SURFACE WATER DETAILS SHEET 6 OF 6

client DWYER NOLAN DEVELOPMENTS

|                             |        |          |            |
|-----------------------------|--------|----------|------------|
| designed by                 | author | scale    | sheet size |
| LMCL                        | DCH    | AS SHOWN | A1         |
| drawing no.                 |        |          | revision   |
| 200060-DBFL-SW-ST-DR-C-5016 |        |          | P02        |